

Cahuilla Park Baseball Fields

Claremont,CA

Lighting System

Pole / Fixture Summary						
Pole ID	Pole Height	Mtg Height	Fixture Qty	Luminaire Type	Load	Circuit
A1	80'	80'	3	TLC-LED-1200	3.51 kW	A
		16'	1	TLC-BT-575	0.58 kW	A
A2	80'	80'	3	TLC-LED-1200	3.51 kW	A
		80'	2	TLC-LED-1200	2.34 kW	B
		80'	1	TLC-LED-900	0.89 kW	B
		16'	1	TLC-BT-575	0.58 kW	B
		16'	1	TLC-BT-575	0.58 kW	A
A3	80'	80'	2	TLC-LED-1200	2.34 kW	B
		80'	3	TLC-LED-900	2.67 kW	C
		80'	1	TLC-LED-900	0.89 kW	B
		16'	1	TLC-BT-575	0.58 kW	B
		16'	1	TLC-BT-575	0.58 kW	C
A4	80'	80'	3	TLC-LED-900	2.67 kW	C
		16'	1	TLC-BT-575	0.58 kW	C
B1	80'	80'	6	TLC-LED-1500	8.58 kW	A
		16'	1	TLC-BT-575	0.58 kW	A
B2	80'	80'	6	TLC-LED-1200	7.02 kW	B
		80'	6	TLC-LED-1500	8.58 kW	A
		16'	1	TLC-BT-575	0.58 kW	B
		16'	1	TLC-BT-575	0.58 kW	A
		50'	2	TLC-LED-900	1.78 kW	D
B3	80'	80'	6	TLC-LED-1200	7.02 kW	B
		80'	6	TLC-LED-1200	7.02 kW	C
		16'	1	TLC-BT-575	0.58 kW	B
		16'	1	TLC-BT-575	0.58 kW	C
B4	80'	80'	6	TLC-LED-1200	7.02 kW	C
		16'	1	TLC-BT-575	0.58 kW	C
C1-C2	70'	70'	4	TLC-LED-1200	4.68 kW	A
		16'	2	TLC-BT-575	1.15 kW	A
C3-C4	60'	60'	4	TLC-LED-900	3.56 kW	B
		16'	2	TLC-BT-575	1.15 kW	B
C5-C6	60'	60'	4	TLC-LED-900	3.56 kW	C
		16'	2	TLC-BT-575	1.15 kW	C
14			104		103.24 kW	

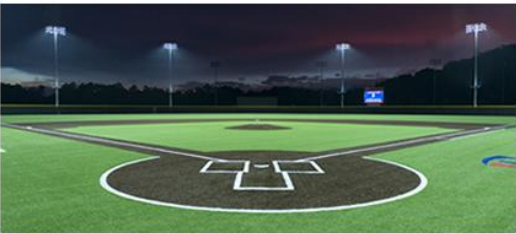
Circuit Summary				
Circuit	Description	Load	Fixture Qty	
A	Baseball 1	38.14 kW	34	
B	Baseball 2	32.22 kW	34	
C	Baseball 3	31.1 kW	34	
D	Batting Cage	1.78 kW	2	

Fixture Type Summary							
Type	Source	Wattage	Lumens	L90	L80	L70	Quantity
TLC-LED-1200	LED 5700K - 75 CRI	1170W	136,000	>120,000	>120,000	>120,000	42
TLC-LED-1500	LED 5700K - 75 CRI	1430W	160,000	>120,000	>120,000	>120,000	12
TLC-BT-575	LED 5700K - 75 CRI	525W	52,000	>120,000	>120,000	>120,000	24
TLC-LED-900	LED 5700K - 75 CRI	890W	89,600	>120,000	>120,000	>120,000	26

Light Level Summary

Calculation Grid Summary								
Grid Name	Calculation Metric	Illumination					Circuits	Fixture Qty
		Ave	Min	Max	Max/Min	Ave/Min		
Baseball 1 (Infield)	Horizontal Illuminance	51.9	38	61	1.59	1.37	A	34
Baseball 1 (Outfield)	Horizontal Illuminance	31.7	19	44	2.31	1.67	A	34
Baseball 2 (Infield)	Horizontal Illuminance	50.4	45	66	1.47	1.12	B	34
Baseball 2 (Outfield)	Horizontal Illuminance	32.7	23	44	1.95	1.42	B	34
Baseball 3 (Infield)	Horizontal Illuminance	50.8	37	60	1.62	1.37	C	34

From Hometown to Professional



Cahuilla Park Baseball Fields

Claremont,CA

Lighting System

Pole / Fixture Summary						
Pole ID	Pole Height	Mtg Height	Fixture Qty	Luminaire Type	Load	Circuit
A1	80'	80'	3	TLC-LED-1200	3.51 kW	A
		16'	1	TLC-BT-575	0.58 kW	A
A2	80'	80'	3	TLC-LED-1200	3.51 kW	A
		80'	2	TLC-LED-1200	2.34 kW	B
		80'	1	TLC-LED-900	0.89 kW	B
		16'	1	TLC-BT-575	0.58 kW	B
		16'	1	TLC-BT-575	0.58 kW	A
A3	80'	80'	2	TLC-LED-1200	2.34 kW	B
		80'	3	TLC-LED-900	2.67 kW	C
		80'	1	TLC-LED-900	0.89 kW	B
		16'	1	TLC-BT-575	0.58 kW	B
		16'	1	TLC-BT-575	0.58 kW	C
A4	80'	80'	3	TLC-LED-900	2.67 kW	C
		16'	1	TLC-BT-575	0.58 kW	C
B1	80'	80'	6	TLC-LED-1500	8.58 kW	A
		16'	1	TLC-BT-575	0.58 kW	A
B2	80'	80'	6	TLC-LED-1200	7.02 kW	B
		80'	6	TLC-LED-1500	8.58 kW	A
		16'	1	TLC-BT-575	0.58 kW	B
		16'	1	TLC-BT-575	0.58 kW	A
		50'	2	TLC-LED-900	1.78 kW	D
B3	80'	80'	6	TLC-LED-1200	7.02 kW	B
		80'	6	TLC-LED-1200	7.02 kW	C
		16'	1	TLC-BT-575	0.58 kW	B
		16'	1	TLC-BT-575	0.58 kW	C
B4	80'	80'	6	TLC-LED-1200	7.02 kW	C
		16'	1	TLC-BT-575	0.58 kW	C
C1-C2	70'	70'	4	TLC-LED-1200	4.68 kW	A
		16'	2	TLC-BT-575	1.15 kW	A
C3-C4	60'	60'	4	TLC-LED-900	3.56 kW	B
		16'	2	TLC-BT-575	1.15 kW	B
C5-C6	60'	60'	4	TLC-LED-900	3.56 kW	C
		16'	2	TLC-BT-575	1.15 kW	C
14			104		103.24 kW	

Circuit Summary				
Circuit	Description	Load	Fixture Qty	
A	Baseball 1	38.14 kW	34	
B	Baseball 2	32.22 kW	34	
C	Baseball 3	31.1 kW	34	
D	Batting Cage	1.78 kW	2	

Fixture Type Summary							
Type	Source	Wattage	Lumens	L90	L80	L70	Quantity
TLC-LED-1200	LED 5700K - 75 CRI	1170W	136,000	>120,000	>120,000	>120,000	42
TLC-LED-1500	LED 5700K - 75 CRI	1430W	160,000	>120,000	>120,000	>120,000	12
TLC-BT-575	LED 5700K - 75 CRI	575W	52,000	>120,000	>120,000	>120,000	24
TLC-LED-900	LED 5700K - 75 CRI	890W	89,600	>120,000	>120,000	>120,000	26

Light Level Summary

Calculation Grid Summary								
Grid Name	Calculation Metric	Illumination					Circuits	Fixture Qty
		Ave	Min	Max	Max/Min	Ave/Min		
Baseball 3 (Outfield)	Horizontal Illuminance	31.2	20	42	2.14	1.56	C	34
Batting Cage	Horizontal	31.8	18	41	2.28	1.77	D	2
North Spill	Horizontal	0.11	0	0.75	0.00		A,B,C,D	104
North Spill	Max Candela (by Fixture)	5546	3.40	24497	7202.53	1631.19	A,B,C,D	104
North Spill	Max Vertical Illuminance Metric	0.21	0	1.10	0.00		A,B,C,D	104
West Spill	Horizontal	0	0	0	0.00		A,B,C,D	104
West Spill	Max Vertical Illuminance Metric	0	0	0	0.00		A,B,C,D	104

ENGINEERED DESIGN By: Brendon Gunder File #210136A - 01-Feb-21

From Hometown to Professional



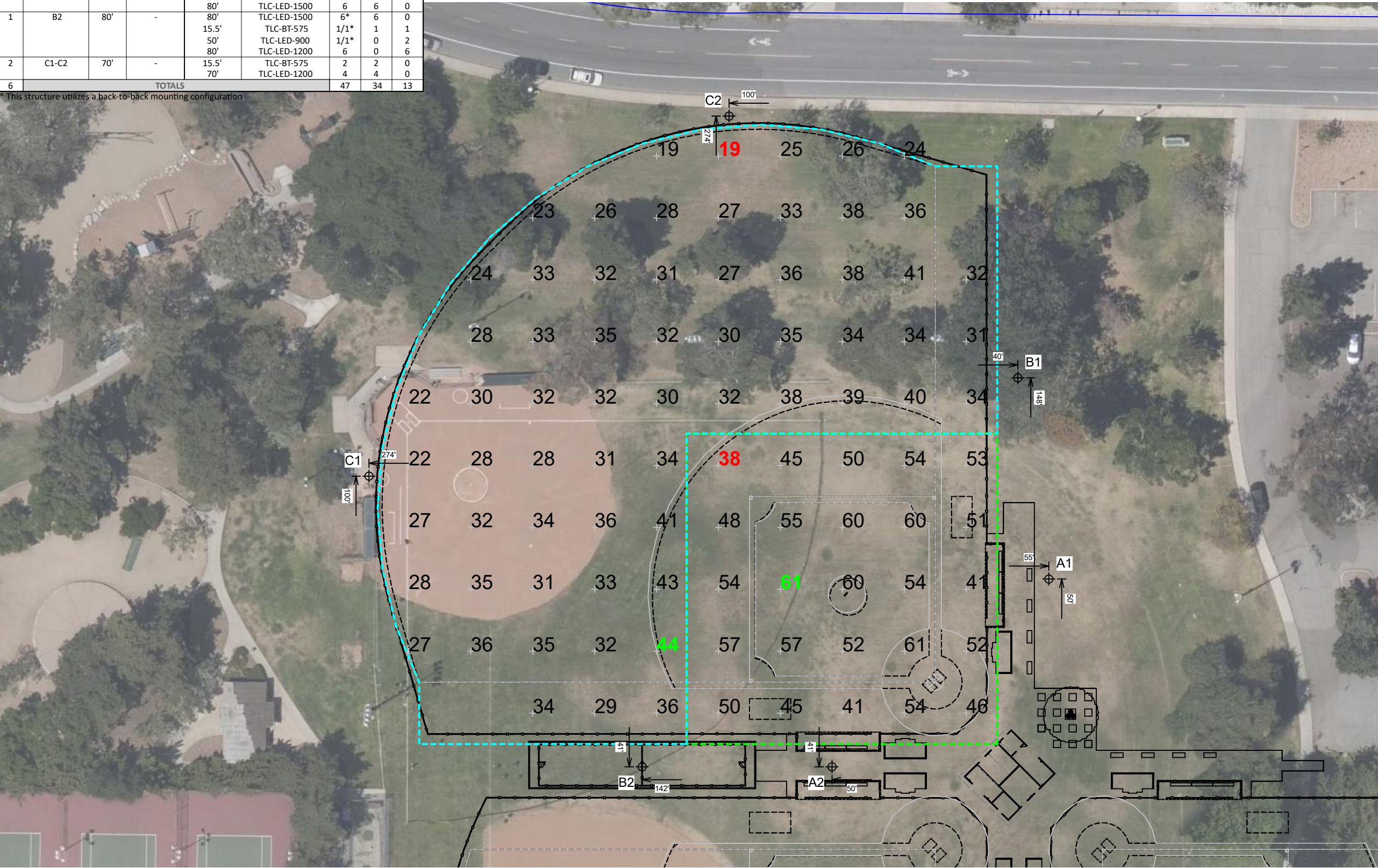
We Make It Happen.®

Not to be reproduced in whole or part without the written consent of Musco Sports Lighting, LLC. ©1981, 2021 Musco Sports Lighting, LLC.

PROJECT SUMMARY

EQUIPMENT LIST FOR AREAS SHOWN									
Pole				Luminaires					
QTY	LOCATION	SIZE	GRADE ELEVATION	MOUNTING HEIGHT	LUMINAIRE TYPE	QTY / POLE	THIS GRID	OTHER GRIDS	
1	A1	80'	-	15.5'	TLC-BT-575	1	1	1	0
				80'	TLC-LED-1200	3	3	0	0
1	A2	80'	-	80'	TLC-LED-900	1	0	1	1
				15.5'	TLC-BT-575	1/1*	1	1	1
				80'	TLC-LED-1200	2/3*	3	2	2
1	B1	80'	-	15.5'	TLC-BT-575	1	1	0	0
				80'	TLC-LED-1500	6	6	0	0
1	B2	80'	-	80'	TLC-LED-1500	6*	6	0	0
				15.5'	TLC-BT-575	1/1*	1	1	1
				50'	TLC-LED-900	1/1*	0	2	2
				80'	TLC-LED-1200	6	0	6	6
2	C1-C2	70'	-	15.5'	TLC-BT-575	2	2	0	0
				70'	TLC-LED-1200	4	4	0	0
6	TOTALS					47	34	13	

* This structure utilizes a back-to-back mounting configuration



Cahuilla Park Baseball Fields

Claremont, CA

GRID SUMMARY	
Name:	Baseball 1
Size:	250'/305'/250' - basepath 90'
Spacing:	30.0' x 30.0'
Height:	3.0' above grade

ILLUMINATION SUMMARY		
MAINTAINED HORIZONTAL FOOTCANDLES		
	Infield	Outfield
Guaranteed Average:	50	30
Scan Average:	51.91	31.66
Maximum:	61	44
Minimum:	38	19
Avg / Min:	1.36	1.67
Max / Min:	1.59	2.31
UG (adjacent pts):	1.32	1.50
CU:	0.73	
No. of Points:	25	63
LUMINAIRE INFORMATION		
Applied Circuits:	A	
No. of Luminaires:	34	
Total Load:	38.14 kW	

Guaranteed Performance: The ILLUMINATION described above is guaranteed per your Musco Warranty document and includes a 0.95 dirt depreciation factor.

Field Measurements: Individual field measurements may vary from computer-calculated predictions and should be taken in accordance with IESNA RP-6-15.

Electrical System Requirements: Refer to Amperage Draw Chart and/or the "Musco Control System Summary" for electrical sizing.

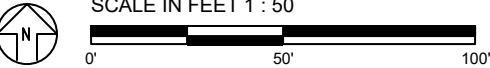
Installation Requirements: Results assume ± 3% nominal voltage at line side of the driver and structures located within 3 feet (1m) of design locations.



We Make It Happen.®

Not to be reproduced in whole or part without the written consent of Musco Sports Lighting, LLC. ©1981, 2021 Musco Sports Lighting, LLC.

ILLUMINATION SUMMARY

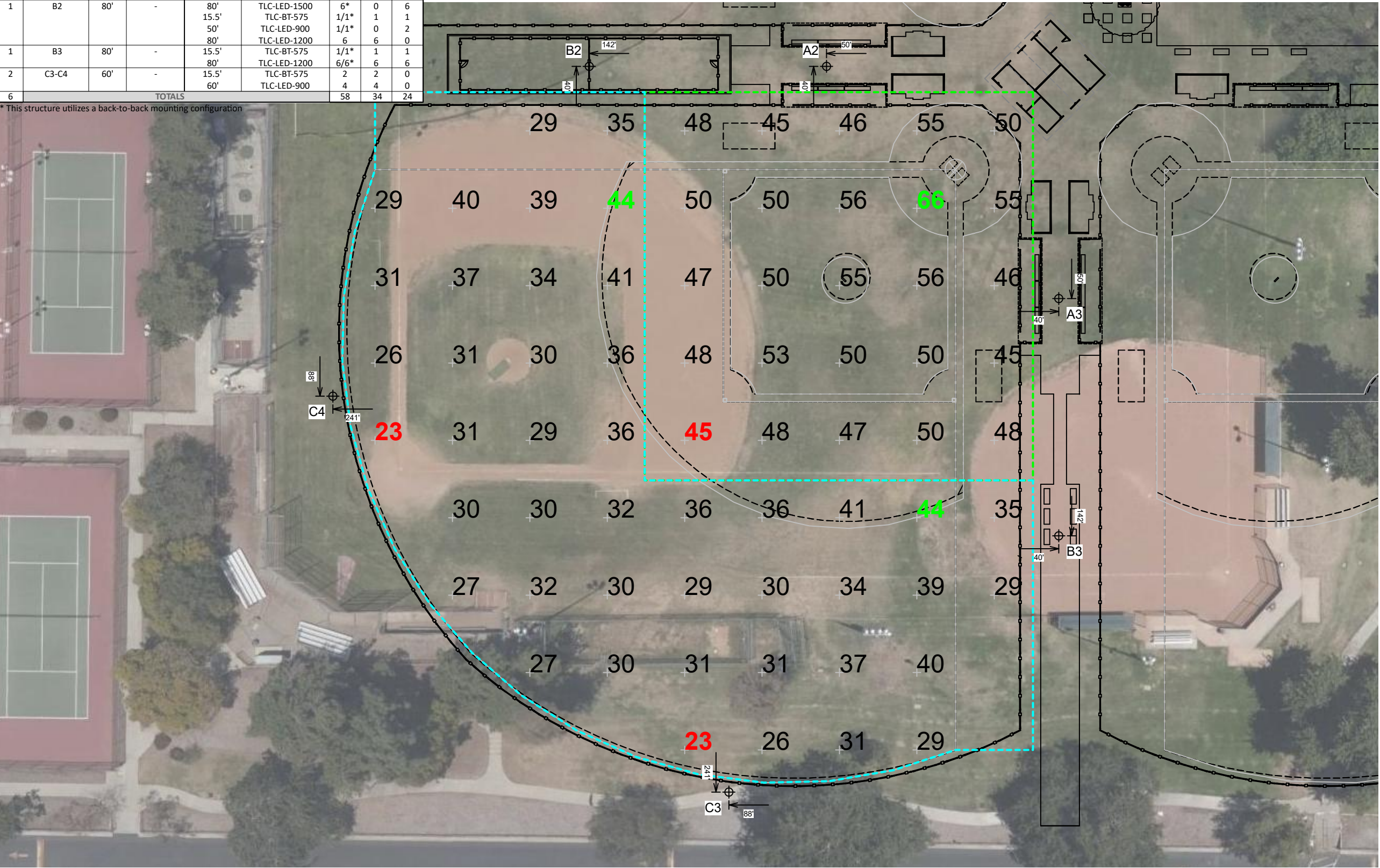


Pole location(s) ⚡ dimensions are relative to 0,0 reference point(s) ⊗

EQUIPMENT LIST FOR AREAS SHOWN

Pole				Luminaires				
QTY	LOCATION	SIZE	GRADE ELEVATION	MOUNTING HEIGHT	LUMINAIRE TYPE	QTY / POLE	THIS GRID	OTHER GRIDS
1	A2	80'	-	80'	TLC-LED-900	1	1	0
				15.5'	TLC-BT-575	1/1*	1	1
				80'	TLC-LED-1200	2/3*	2	3
1	A3	80'	-	80'	TLC-LED-900	1/3*	1	3
				15.5'	TLC-BT-575	1/1*	1	1
				80'	TLC-LED-1200	2	2	0
1	B2	80'	-	80'	TLC-LED-1500	6*	0	6
				15.5'	TLC-BT-575	1/1*	1	1
				50'	TLC-LED-900	1/1*	0	2
1	B3	80'	-	80'	TLC-LED-1200	6	6	0
				15.5'	TLC-BT-575	1/1*	1	1
				80'	TLC-LED-1200	6/6*	6	6
2	C3-C4	60'	-	15.5'	TLC-BT-575	2	2	0
				60'	TLC-LED-900	4	4	0
6	TOTALS					58	34	24

* This structure utilizes a back-to-back mounting configuration



Cahuilla Park Baseball Fields

Claremont, CA

GRID SUMMARY

Name: **Baseball 2**
Size: 225'/265'/225' - basepath 90'
Spacing: 30.0' x 30.0'
Height: 3.0' above grade

ILLUMINATION SUMMARY

MAINTAINED HORIZONTAL FOOTCANDLES

	Infield	Outfield
Guaranteed Average:	50	30
Scan Average:	50.39	32.72
Maximum:	66	44
Minimum:	45	23
Avg / Min:	1.13	1.45
Max / Min:	1.47	1.95
UG (adjacent pts):	1.22	1.40
CU:	0.69	
No. of Points:	25	44

LUMINAIRE INFORMATION

Applied Circuits: B
No. of Luminaires: 34
Total Load: 32.22 kW

Guaranteed Performance: The ILLUMINATION described above is guaranteed per your Musco Warranty document and includes a 0.95 dirt depreciation factor.

Field Measurements: Individual field measurements may vary from computer-calculated predictions and should be taken in accordance with IESNA RP-6-15.

Electrical System Requirements: Refer to Amperage Draw Chart and/or the "Musco Control System Summary" for electrical sizing.

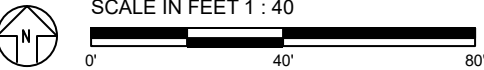
Installation Requirements: Results assume ± 3% nominal voltage at line side of the driver and structures located within 3 feet (1m) of design locations.



We Make It Happen.®

Not to be reproduced in whole or part without the written consent of Musco Sports Lighting, LLC. ©1981, 2021 Musco Sports Lighting, LLC.

ILLUMINATION SUMMARY

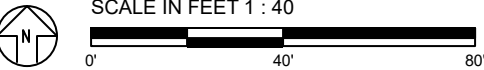
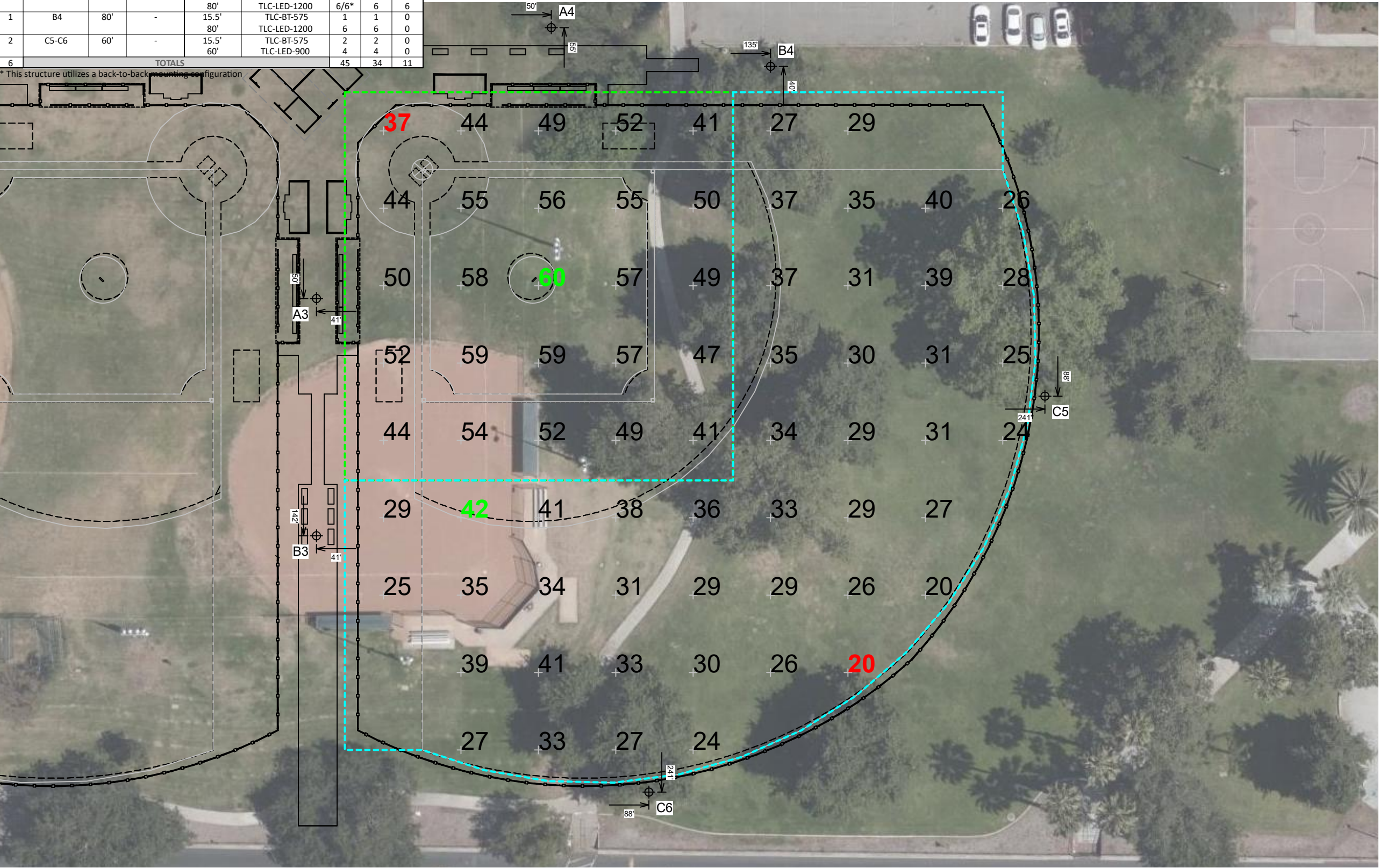


Pole location(s) ⦿ dimensions are relative to 0,0 reference point(s) ⊗

EQUIPMENT LIST FOR AREAS SHOWN

Pole				Luminaires				
QTY	LOCATION	SIZE	GRADE ELEVATION	MOUNTING HEIGHT	LUMINAIRE TYPE	QTY / POLE	THIS GRID	OTHER GRIDS
1	A3	80'	-	80'	TLC-LED-900	1/3*	3	1
				15.5'	TLC-BT-575	1/1*	1	1
				80'	TLC-LED-1200	2	0	2
1	A4	80'	-	15.5'	TLC-BT-575	1	1	0
				80'	TLC-LED-900	3	3	0
1	B3	80'	-	15.5'	TLC-BT-575	1/1*	1	1
				80'	TLC-LED-1200	6/6*	6	6
1	B4	80'	-	15.5'	TLC-BT-575	1	1	0
				80'	TLC-LED-1200	6	6	0
2	C5-C6	60'	-	15.5'	TLC-BT-575	2	2	0
				60'	TLC-LED-900	4	4	0
6	TOTALS					45	34	11

* This structure utilizes a back-to-back mounting configuration



Pole location(s) ⦿ dimensions are relative to 0,0 reference point(s) ⊗

Cahuilla Park Baseball Fields

Claremont, CA

GRID SUMMARY

Name:	Baseball 3
Size:	225'/265'/225' - basepath 90'
Spacing:	30.0' x 30.0'
Height:	3.0' above grade

ILLUMINATION SUMMARY

MAINTAINED HORIZONTAL FOOTCANDLES

	Infield	Outfield
Guaranteed Average:	50	30
Scan Average:	50.78	31.20
Maximum:	60	42
Minimum:	37	20
Avg / Min:	1.37	1.58
Max / Min:	1.62	2.14
UG (adjacent pts):	1.25	1.50
CU:	0.71	
No. of Points:	25	44

LUMINAIRE INFORMATION

Applied Circuits:	C
No. of Luminaires:	34
Total Load:	31.1 kW

Guaranteed Performance: The ILLUMINATION described above is guaranteed per your Musco Warranty document and includes a 0.95 dirt depreciation factor.

Field Measurements: Individual field measurements may vary from computer-calculated predictions and should be taken in accordance with IESNA RP-6-15.

Electrical System Requirements: Refer to Amperage Draw Chart and/or the "Musco Control System Summary" for electrical sizing.

Installation Requirements: Results assume ± 3% nominal voltage at line side of the driver and structures located within 3 feet (1m) of design locations.



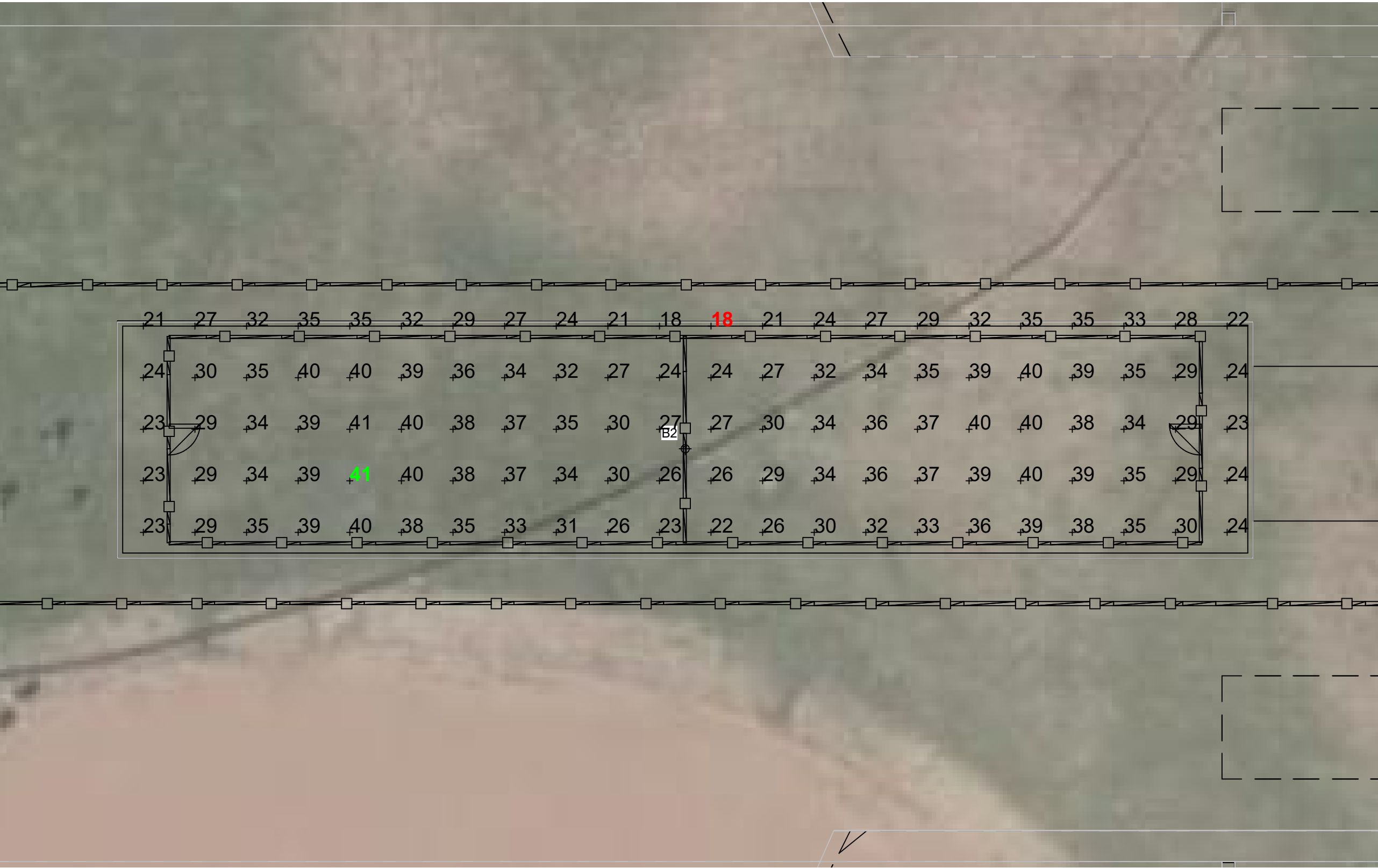
We Make It Happen.®

Not to be reproduced in whole or part without the written consent of Musco Sports Lighting, LLC. ©1981, 2021 Musco Sports Lighting, LLC.

ILLUMINATION SUMMARY

EQUIPMENT LIST FOR AREAS SHOWN								
Pole				Luminaires				
QTY	LOCATION	SIZE	GRADE ELEVATION	MOUNTING HEIGHT	LUMINAIRE TYPE	QTY / POLE	THIS GRID	OTHER GRIDS
1	B2	80'	-	80'	TLC-LED-1500	6*	0	6
				15.5'	TLC-BT-575	1/1*	0	2
				50'	TLC-LED-900	1/1*	2	0
				80'	TLC-LED-1200	6	0	6
1	TOTALS					16	2	14

* This structure utilizes a back-to-back mounting configuration



Cahuilla Park Baseball Fields

Claremont,CA

GRID SUMMARY	
Name:	Batting Cage
Spacing:	5.0' x 5.0'
Height:	3.0' above grade

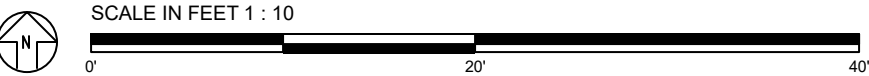
ILLUMINATION SUMMARY	
MAINTAINED HORIZONTAL FOOTCANDLES	
	Entire Grid
Scan Average:	31.84
Maximum:	41
Minimum:	18
Avg / Min:	1.77
Max / Min:	2.28
UG (adjacent pts):	1.32
CU:	0.50
No. of Points:	110
LUMINAIRE INFORMATION	
Applied Circuits:	D
No. of Luminaires:	2
Total Load:	1.78 kW

Guaranteed Performance: The ILLUMINATION described above is guaranteed per your Musco Warranty document and includes a 0.95 dirt depreciation factor.

Field Measurements: Individual field measurements may vary from computer-calculated predictions and should be taken in accordance with IESNA RP-6-15.

Electrical System Requirements: Refer to Amperage Draw Chart and/or the "Musco Control System Summary" for electrical sizing.

Installation Requirements: Results assume ± 3% nominal voltage at line side of the driver and structures located within 3 feet (1m) of design locations.



Pole location(s) ✚ dimensions are relative to 0,0 reference point(s) ⊗



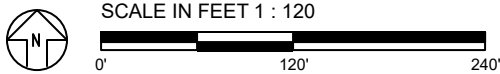
We Make It Happen.®

Not to be reproduced in whole or part without the written consent of Musco Sports Lighting, LLC. ©1981, 2021 Musco Sports Lighting, LLC.

ILLUMINATION SUMMARY



NOTES: Spill values calculated with all fixtures enabled



ENGINEERED DESIGN By: Brendon Guler · File #210136A · 01-Feb-21

Cahuilla Park Baseball Fields
Claremont, CA

GRID SUMMARY	
Name:	North Spill
Spacing:	30.0'
Height:	3.0' above grade

ILLUMINATION SUMMARY	
HORIZONTAL FOOTCANDLES	
Scan Average:	Entire Grid 0.1085
Maximum:	0.75
Minimum:	0.00
No. of Points:	41
LUMINAIRE INFORMATION	
Applied Circuits:	A, B, C, D
No. of Luminaires:	104
Total Load:	103.24 kW

Guaranteed Performance: The ILLUMINATION described above is guaranteed per your Musco Warranty document.

Field Measurements: Individual field measurements may vary from computer-calculated predictions and should be taken in accordance with IESNA RP-6-15.

Electrical System Requirements: Refer to Amperage Draw Chart and/or the "Musco Control System Summary" for electrical sizing.

Installation Requirements: Results assume ± 3% nominal voltage at line side of the driver and structures located within 3 feet (1m) of design locations.



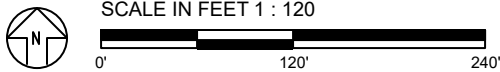
We Make It Happen.®

Not to be reproduced in whole or part without the written consent of Musco Sports Lighting, LLC. ©1981, 2021 Musco Sports Lighting, LLC.

ILLUMINATION SUMMARY



NOTES: Spill values calculated with all fixtures enabled



ENGINEERED DESIGN By: Brendon Guler · File #210136A · 01-Feb-21

Cahuilla Park Baseball Fields

Claremont, CA

GRID SUMMARY	
Name:	North Spill
Spacing:	30.0'
Height:	3.0' above grade

ILLUMINATION SUMMARY	
MAX VERTICAL FOOTCANDLES	
Scan Average:	Entire Grid 0.2139
Maximum:	1.10
Minimum:	0.00
No. of Points:	41
LUMINAIRE INFORMATION	
Applied Circuits:	A, B, C, D
No. of Luminaires:	104
Total Load:	103.24 kW

Guaranteed Performance: The ILLUMINATION described above is guaranteed per your Musco Warranty document.

Field Measurements: Individual field measurements may vary from computer-calculated predictions and should be taken in accordance with IESNA RP-6-15.

Electrical System Requirements: Refer to Amperage Draw Chart and/or the "Musco Control System Summary" for electrical sizing.

Installation Requirements: Results assume $\pm 3\%$ nominal voltage at line side of the driver and structures located within 3 feet (1m) of design locations.



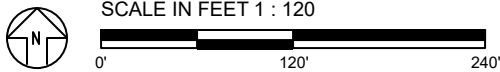
We Make It Happen.®

Not to be reproduced in whole or part without the written consent of Musco Sports Lighting, LLC. ©1981, 2021 Musco Sports Lighting, LLC.

ILLUMINATION SUMMARY



NOTES: Spill values calculated with all fixtures enabled



ENGINEERED DESIGN By: Brendon Guler · File #210136A · 01-Feb-21

Cahuilla Park Baseball Fields
Claremont, CA

GRID SUMMARY	
Name:	North Spill
Spacing:	30.0'
Height:	3.0' above grade

ILLUMINATION SUMMARY	
CANDELA (PER FIXTURE)	
Scan Average:	Entire Grid 5546.0342
Maximum:	24497.34
Minimum:	3.40
No. of Points:	41
LUMINAIRE INFORMATION	
Applied Circuits:	A, B, C, D
No. of Luminaires:	104
Total Load:	103.24 kW

Guaranteed Performance: The ILLUMINATION described above is guaranteed per your Musco Warranty document.

Field Measurements: Individual field measurements may vary from computer-calculated predictions and should be taken in accordance with IESNA RP-6-15.

Electrical System Requirements: Refer to Amperage Draw Chart and/or the "Musco Control System Summary" for electrical sizing.

Installation Requirements: Results assume ± 3% nominal voltage at line side of the driver and structures located within 3 feet (1m) of design locations.



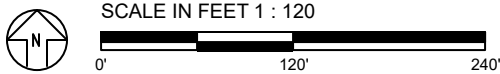
We Make It Happen.®

Not to be reproduced in whole or part without the written consent of Musco Sports Lighting, LLC. ©1981, 2021 Musco Sports Lighting, LLC.

ILLUMINATION SUMMARY



NOTES: Spill values calculated with all fixtures enabled



ENGINEERED DESIGN By: Brendon Guler · File #210136A · 01-Feb-21

Cahuilla Park Baseball Fields
Claremont, CA

GRID SUMMARY	
Name:	West Spill
Spacing:	30.0'
Height:	3.0' above grade

ILLUMINATION SUMMARY	
HORIZONTAL FOOTCANDLES	
Scan Average:	Entire Grid 0.0000
Maximum:	0.00
Minimum:	0.00
No. of Points:	32
LUMINAIRE INFORMATION	
Applied Circuits:	A, B, C, D
No. of Luminaires:	104
Total Load:	103.24 kW

Guaranteed Performance: The ILLUMINATION described above is guaranteed per your Musco Warranty document.

Field Measurements: Individual field measurements may vary from computer-calculated predictions and should be taken in accordance with IESNA RP-6-15.

Electrical System Requirements: Refer to Amperage Draw Chart and/or the "Musco Control System Summary" for electrical sizing.

Installation Requirements: Results assume ± 3% nominal voltage at line side of the driver and structures located within 3 feet (1m) of design locations.

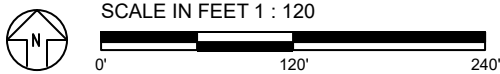


Not to be reproduced in whole or part without the written consent of Musco Sports Lighting, LLC. ©1981, 2021 Musco Sports Lighting, LLC.

ILLUMINATION SUMMARY



NOTES: Spill values calculated with all fixtures enabled



ENGINEERED DESIGN By: Brendon Guler · File #210136A · 01-Feb-21

Cahuilla Park Baseball Fields
Claremont, CA

GRID SUMMARY	
Name:	West Spill
Spacing:	30.0'
Height:	3.0' above grade

ILLUMINATION SUMMARY	
MAX VERTICAL FOOTCANDLES	
Scan Average:	Entire Grid 0.0003
Maximum:	0.00
Minimum:	0.00
No. of Points:	32
LUMINAIRE INFORMATION	
Applied Circuits:	A, B, C, D
No. of Luminaires:	104
Total Load:	103.24 kW

Guaranteed Performance: The ILLUMINATION described above is guaranteed per your Musco Warranty document.

Field Measurements: Individual field measurements may vary from computer-calculated predictions and should be taken in accordance with IESNA RP-6-15.

Electrical System Requirements: Refer to Amperage Draw Chart and/or the "Musco Control System Summary" for electrical sizing.

Installation Requirements: Results assume ± 3% nominal voltage at line side of the driver and structures located within 3 feet (1m) of design locations.



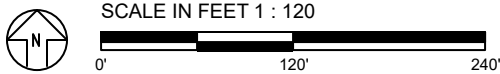
We Make It Happen.®

Not to be reproduced in whole or part without the written consent of Musco Sports Lighting, LLC. ©1981, 2021 Musco Sports Lighting, LLC.

ILLUMINATION SUMMARY



NOTES: Spill values calculated with all fixtures enabled



ENGINEERED DESIGN By: Brendon Guler · File #210136A · 01-Feb-21

Cahuilla Park Baseball Fields

Claremont, CA

GRID SUMMARY	
Name:	West Spill
Spacing:	30.0'
Height:	3.0' above grade

ILLUMINATION SUMMARY	
CANDELA (PER FIXTURE)	
Scan Average:	Entire Grid 56.0582
Maximum:	238.12
Minimum:	2.83
No. of Points:	32
LUMINAIRE INFORMATION	
Applied Circuits:	A, B, C, D
No. of Luminaires:	104
Total Load:	103.24 kW

Guaranteed Performance: The ILLUMINATION described above is guaranteed per your Musco Warranty document.

Field Measurements: Individual field measurements may vary from computer-calculated predictions and should be taken in accordance with IESNA RP-6-15.

Electrical System Requirements: Refer to Amperage Draw Chart and/or the "Musco Control System Summary" for electrical sizing.

Installation Requirements: Results assume ± 3% nominal voltage at line side of the driver and structures located within 3 feet (1m) of design locations.



We Make It Happen.

Not to be reproduced in whole or part without the written consent of Musco Sports Lighting, LLC. ©1981, 2021 Musco Sports Lighting, LLC.

ILLUMINATION SUMMARY

Cahuilla Park Baseball Fields

Claremont, CA

EQUIPMENT LAYOUT

INCLUDES:

- Baseball 1
- Baseball 2
- Baseball 3

Electrical System Requirements: Refer to Amperage Draw Chart and/or the "Musco Control System Summary" for electrical sizing.

Installation Requirements: Results assume ± 3% nominal voltage at line side of the driver and structures located within 3 feet (1m) of design locations.

EQUIPMENT LIST FOR AREAS SHOWN

QTY	Pole			Luminaires		
	LOCATION	SIZE	GRADE ELEVATION	MOUNTING HEIGHT	LUMINAIRE TYPE	QTY/POLE
1	A1	80'	-	15.5' 80'	TLC-BT-575 TLC-LED-1200	1 3
1	A2	80'	-	80' 15.5' 80'	TLC-LED-900 TLC-BT-575 TLC-LED-1200	1 1/1* 2/3*
1	A3	80'	-	80' 15.5' 80'	TLC-LED-900 TLC-BT-575 TLC-LED-1200	1/3* 1/1* 2
1	A4	80'	-	15.5' 80'	TLC-BT-575 TLC-LED-900	1 3
1	B1	80'	-	15.5' 80'	TLC-BT-575 TLC-LED-1500	1 6
1	B2	80'	-	80' 15.5' 50' 80'	TLC-LED-1500 TLC-BT-575 TLC-LED-900 TLC-LED-1200	6* 1/1* 1/1* 6
1	B3	80'	-	15.5' 80'	TLC-BT-575 TLC-LED-1200	1/1* 6/6*
1	B4	80'	-	15.5' 80'	TLC-BT-575 TLC-LED-1200	1 6
2	C1-C2	70'	-	15.5' 70'	TLC-BT-575 TLC-LED-1200	2 4
4	C3-C6	60'	-	15.5' 60'	TLC-BT-575 TLC-LED-900	2 4
14	TOTALS					104

* This structure utilizes a back-to-back mounting configuration

SINGLE LUMINAIRE AMPERAGE DRAW CHART

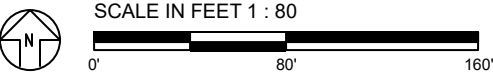
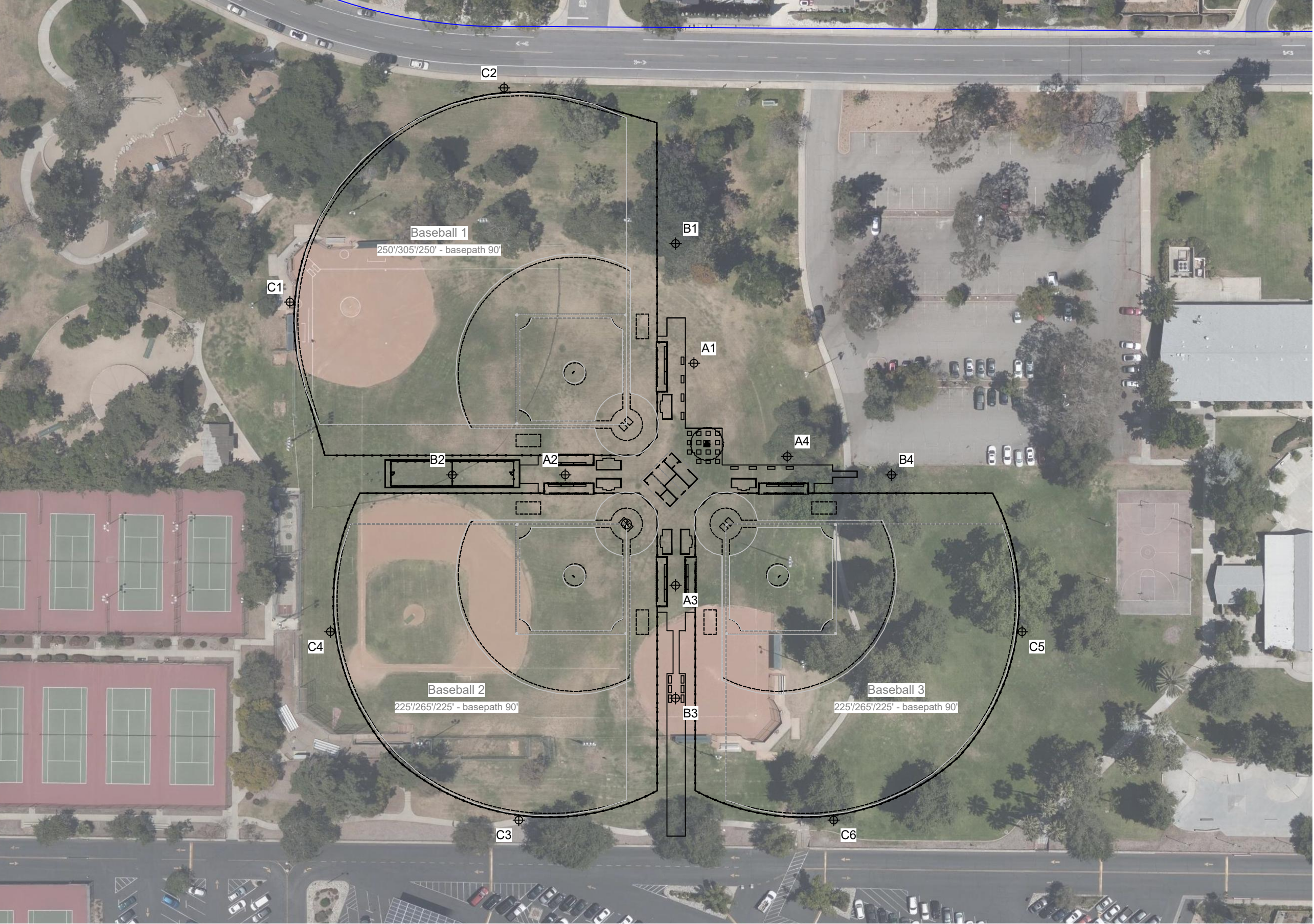
Ballast Specifications (.90 min power factor)	Line Amperage Per Luminaire (max draw)						
	208 (60)	220 (60)	240 (60)	277 (60)	347 (60)	380 (60)	480 (60)
Single Phase Voltage							
TLC-LED-1200	7.0	6.6	6.1	5.2	4.2	4.0	3.0
TLC-LED-1500	8.5	8.1	7.4	6.4	5.1	4.7	3.7
TLC-BT-575	3.4	3.2	2.9	2.5	2.0	1.8	1.5
TLC-LED-900	5.3	5.0	4.6	4.0	3.2	2.9	2.3



We Make It Happen.

Not to be reproduced in whole or part without the written consent of Musco Sports Lighting, LLC. ©1981, 2021 Musco Sports Lighting, LLC.

EQUIPMENT LAYOUT



Pole location(s) ⚓ dimensions are relative to 0,0 reference point(s) ⊗